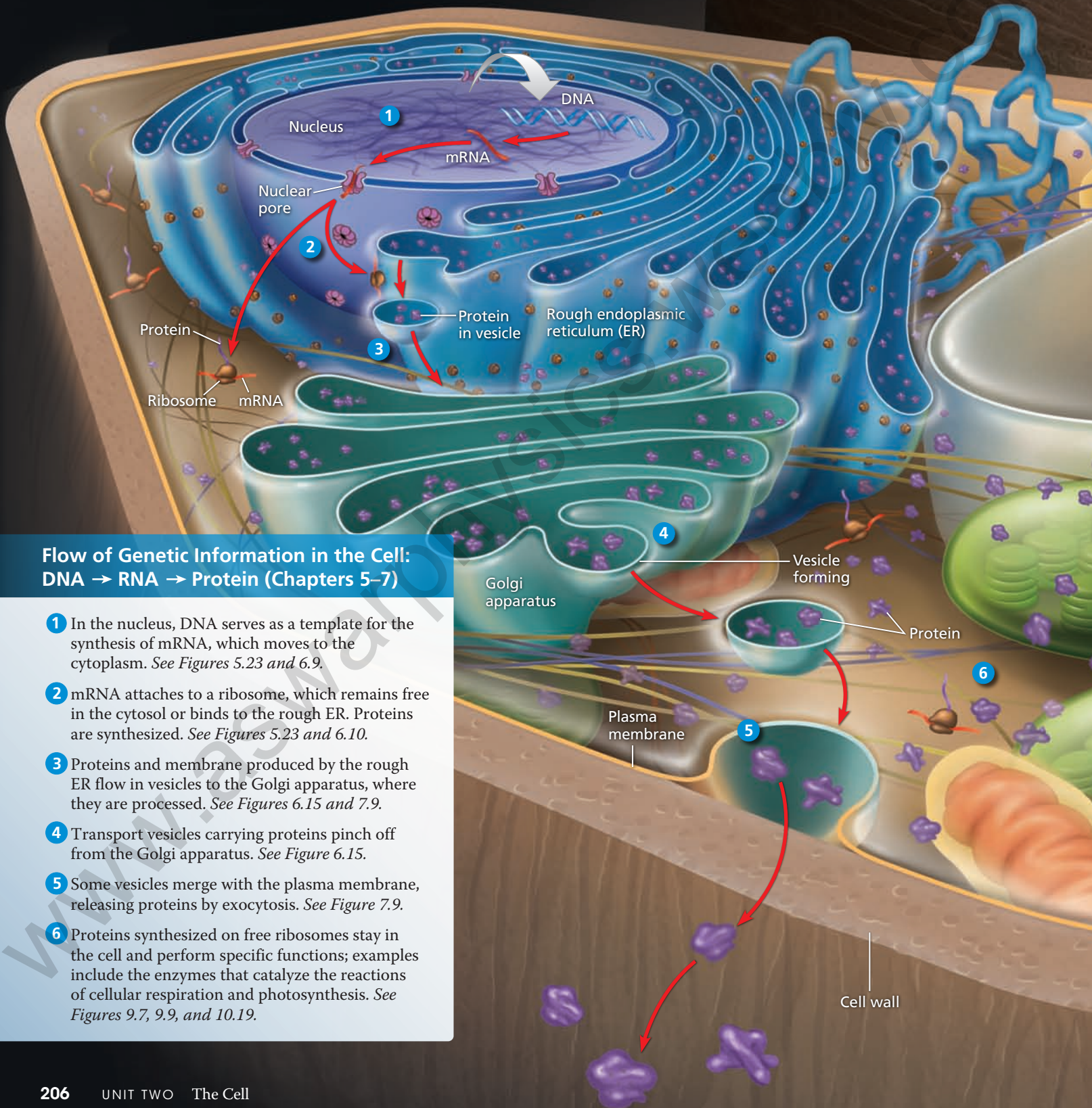


MAKE CONNECTIONS

The Working Cell

This figure illustrates how a generalized plant cell functions, integrating the cellular activities you learned about in Chapters 5–10.



Flow of Genetic Information in the Cell: DNA → RNA → Protein (Chapters 5–7)

- 1 In the nucleus, DNA serves as a template for the synthesis of mRNA, which moves to the cytoplasm. See Figures 5.23 and 6.9.
- 2 mRNA attaches to a ribosome, which remains free in the cytosol or binds to the rough ER. Proteins are synthesized. See Figures 5.23 and 6.10.
- 3 Proteins and membrane produced by the rough ER flow in vesicles to the Golgi apparatus, where they are processed. See Figures 6.15 and 7.9.
- 4 Transport vesicles carrying proteins pinch off from the Golgi apparatus. See Figure 6.15.
- 5 Some vesicles merge with the plasma membrane, releasing proteins by exocytosis. See Figure 7.9.
- 6 Proteins synthesized on free ribosomes stay in the cell and perform specific functions; examples include the enzymes that catalyze the reactions of cellular respiration and photosynthesis. See Figures 9.7, 9.9, and 10.19.

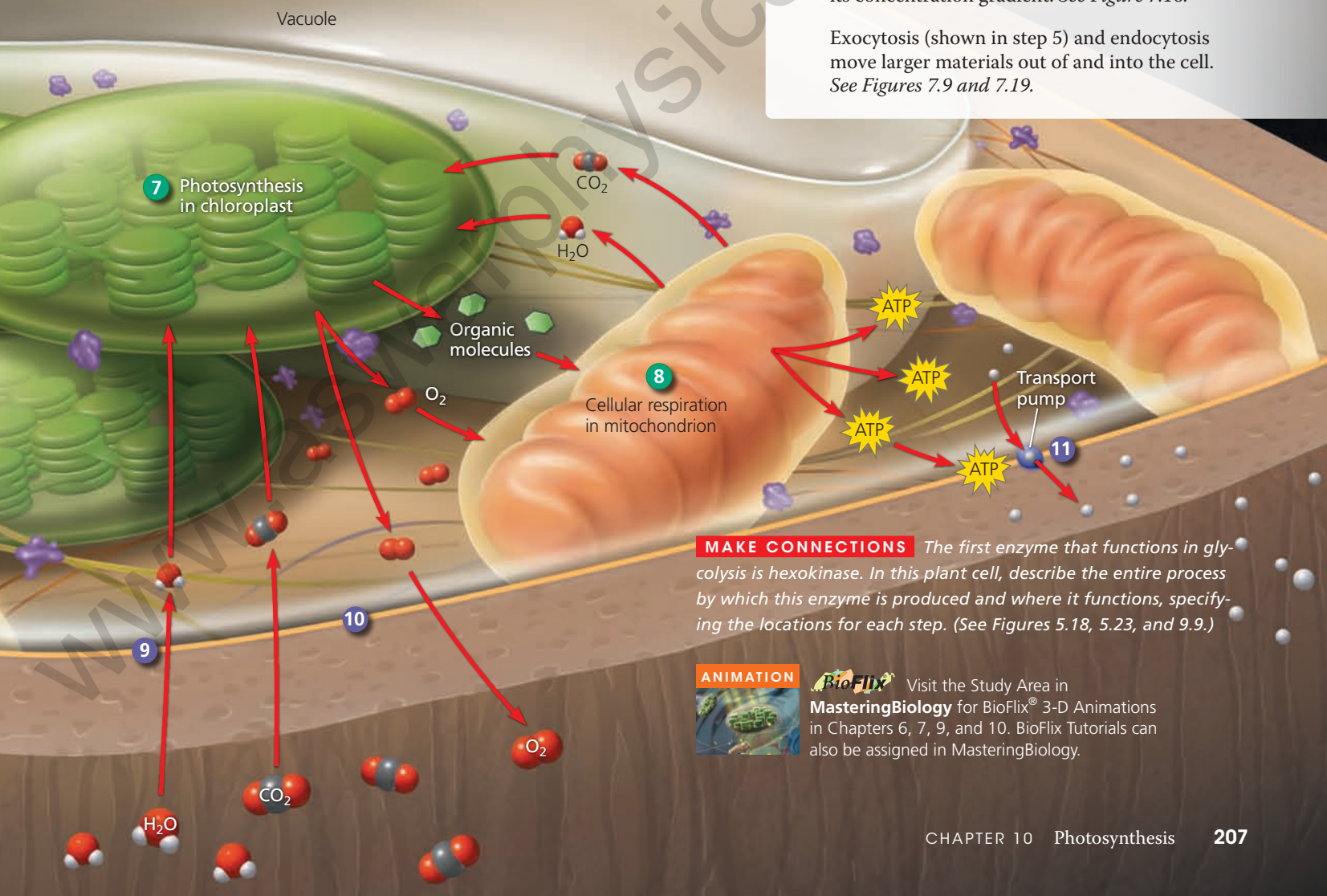
Energy Transformations in the Cell: Photosynthesis and Cellular Respiration (Chapters 8–10)

- 7** In chloroplasts, the process of photosynthesis uses the energy of light to convert CO_2 and H_2O to organic molecules, with O_2 as a by-product. See Figure 10.22.
- 8** In mitochondria, organic molecules are broken down by cellular respiration, capturing energy in molecules of ATP, which are used to power the work of the cell, such as protein synthesis and active transport. CO_2 and H_2O are by-products. See Figures 8.9–8.11, 9.2, and 9.16.

Movement Across Cell Membranes (Chapter 7)

- 9** Water diffuses into and out of the cell directly through the plasma membrane and by facilitated diffusion through aquaporins. See Figure 7.1.
- 10** By passive transport, the CO_2 used in photosynthesis diffuses into the cell and the O_2 formed as a by-product of photosynthesis diffuses out of the cell. Both solutes move down their concentration gradients. See Figures 7.10 and 10.22.
- 11** In active transport, energy (usually supplied by ATP) is used to transport a solute against its concentration gradient. See Figure 7.16.

Exocytosis (shown in step 5) and endocytosis move larger materials out of and into the cell. See Figures 7.9 and 7.19.



MAKE CONNECTIONS The first enzyme that functions in glycolysis is hexokinase. In this plant cell, describe the entire process by which this enzyme is produced and where it functions, specifying the locations for each step. (See Figures 5.18, 5.23, and 9.9.)

ANIMATION



Visit the Study Area in **MasteringBiology** for BioFlix® 3-D Animations in Chapters 6, 7, 9, and 10. BioFlix Tutorials can also be assigned in MasteringBiology.

10 Chapter Review

SUMMARY OF KEY CONCEPTS

CONCEPT 10.1

Photosynthesis converts light energy to the chemical energy of food (pp. 187–190)

- In **autotrophic** eukaryotes, photosynthesis occurs in chloroplasts, organelles containing **thylakoids**. Stacks of thylakoids form grana. **Photosynthesis** is summarized as



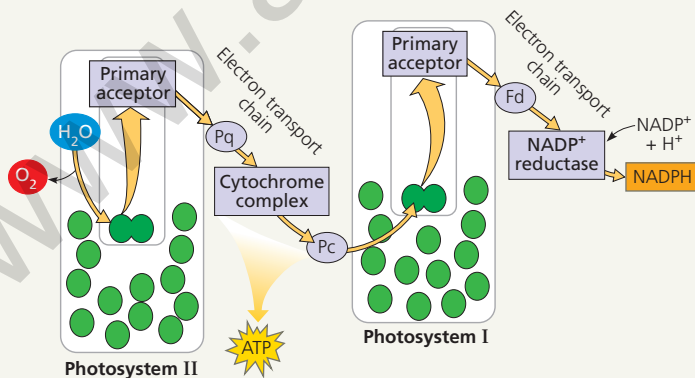
Chloroplasts split water into hydrogen and oxygen, incorporating the electrons of hydrogen into sugar molecules. Photosynthesis is a redox process: H_2O is oxidized, and CO_2 is reduced. The **light reactions** in the thylakoid membranes split water, releasing O_2 , producing ATP, and forming **NADPH**. The **Calvin cycle** in the **stroma** forms sugar from CO_2 , using ATP for energy and NADPH for reducing power.

? Compare the roles of CO_2 and H_2O in respiration and photosynthesis.

CONCEPT 10.2

The light reactions convert solar energy to the chemical energy of ATP and NADPH (pp. 190–199)

- Light is a form of electromagnetic energy. The colors we see as **visible light** include those **wavelengths** that drive photosynthesis. A pigment absorbs light of specific wavelengths; **chlorophyll a** is the main photosynthetic pigment in plants. Other accessory pigments absorb different wavelengths of light and pass the energy on to chlorophyll a.
- A pigment goes from a ground state to an excited state when a **photon** of light boosts one of the pigment's electrons to a higher-energy orbital. This excited state is unstable. Electrons from isolated pigments tend to fall back to the ground state, giving off heat and/or light.
- A **photosystem** is composed of a **reaction-center complex** surrounded by **light-harvesting complexes** that funnel the energy of photons to the reaction-center complex. When a special pair of reaction-center chlorophyll a molecules absorbs energy, one of its electrons is boosted to a higher energy level and transferred to the **primary electron acceptor**. **Photosystem II** contains P680 chlorophyll a molecules in the reaction-center complex; **photosystem I** contains P700 molecules.
- Linear electron flow** during the light reactions uses both photosystems and produces NADPH, ATP, and oxygen:



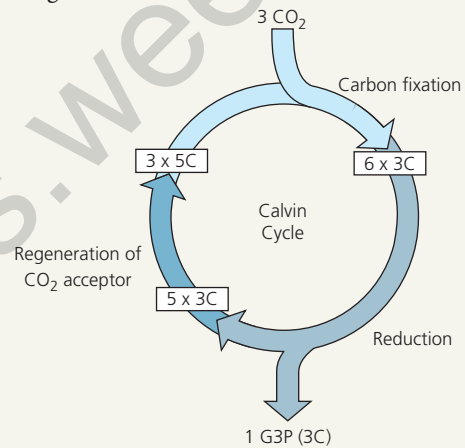
- Cyclic electron flow** employs only one photosystem, producing ATP but no NADPH or O_2 .
- During chemiosmosis in both mitochondria and chloroplasts, electron transport chains generate an H^+ gradient across a membrane. ATP synthase uses this proton-motive force to make ATP.

? The absorption spectrum of chlorophyll a differs from the action spectrum of photosynthesis. Explain this observation.

CONCEPT 10.3

The Calvin cycle uses the chemical energy of ATP and NADPH to reduce CO_2 to sugar (pp. 199–200)

- The Calvin cycle occurs in the stroma, using electrons from NADPH and energy from ATP. One molecule of **G3P** exits the cycle per three CO_2 molecules fixed and is converted to glucose and other organic molecules.



DRAW IT On the diagram above, draw where ATP and NADPH are used and where rubisco functions. Describe these steps.

CONCEPT 10.4

Alternative mechanisms of carbon fixation have evolved in hot, arid climates (pp. 201–207)

- On dry, hot days, **C_3 plants** close their stomata, conserving water. Oxygen from the light reactions builds up. In **photorespiration**, O_2 substitutes for CO_2 in the active site of rubisco. This process consumes organic fuel and releases CO_2 without producing ATP or carbohydrate. Photorespiration may be an evolutionary relic, and it may play a photoprotective role.
- C_4 plants** minimize the cost of photorespiration by incorporating CO_2 into four-carbon compounds in mesophyll cells. These compounds are exported to **bundle-sheath cells**, where they release carbon dioxide for use in the Calvin cycle.
- CAM plants** open their stomata at night, incorporating CO_2 into organic acids, which are stored in mesophyll cells. During the day, the stomata close, and the CO_2 is released from the organic acids for use in the Calvin cycle.
- Organic compounds produced by photosynthesis provide the energy and building material for Earth's ecosystems.

? Why are C_4 and CAM photosynthesis more energetically expensive than C_3 photosynthesis? What climate conditions would favor C_4 and CAM plants?

TEST YOUR UNDERSTANDING

LEVEL 1: KNOWLEDGE/COMPREHENSION

- The light reactions of photosynthesis supply the Calvin cycle with
 - light energy.
 - CO₂ and ATP.
 - H₂O and NADPH.
 - ATP and NADPH.
- Which of the following sequences correctly represents the flow of electrons during photosynthesis?
 - NADPH → O₂ → CO₂
 - H₂O → NADPH → Calvin cycle
 - H₂O → photosystem I → photosystem II
 - NADPH → electron transport chain → O₂
- How is photosynthesis similar in C₄ plants and CAM plants?
 - In both cases, only photosystem I is used.
 - Both types of plants make sugar without the Calvin cycle.
 - In both cases, rubisco is not used to fix carbon initially.
 - Both types of plants make most of their sugar in the dark.
- Which of the following statements is a correct distinction between autotrophs and heterotrophs?
 - Autotrophs, but not heterotrophs, can nourish themselves beginning with CO₂ and other nutrients that are inorganic.
 - Only heterotrophs require chemical compounds from the environment.
 - Cellular respiration is unique to heterotrophs.
 - Only heterotrophs have mitochondria.
- Which of the following does *not* occur during the Calvin cycle?
 - carbon fixation
 - oxidation of NADPH
 - release of oxygen
 - regeneration of the CO₂ acceptor

LEVEL 2: APPLICATION/ANALYSIS

- In mechanism, photophosphorylation is most similar to
 - substrate-level phosphorylation in glycolysis.
 - oxidative phosphorylation in cellular respiration.
 - carbon fixation.
 - reduction of NADP⁺.
- Which process is most directly driven by light energy?
 - creation of a pH gradient by pumping protons across the thylakoid membrane
 - reduction of NADP⁺ molecules
 - removal of electrons from chlorophyll molecules
 - ATP synthesis

LEVEL 3: SYNTHESIS/EVALUATION

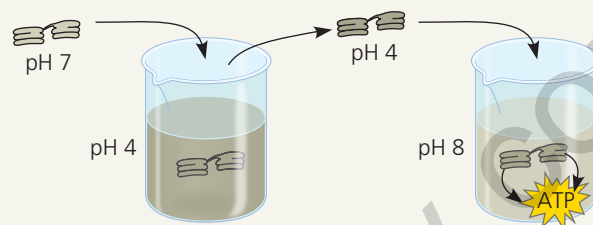
- SCIENCE, TECHNOLOGY, AND SOCIETY**

Scientific evidence indicates that the CO₂ added to the air by the burning of wood and fossil fuels is contributing to global warming, a rise in global temperature. Tropical rain forests are estimated to be responsible for approximately 20% of global photosynthesis, yet the consumption of large amounts of CO₂ by living trees is thought to make little or no *net* contribution to reduction of global warming. Why might this be? (*Hint*: What processes in both living and dead trees produce CO₂?)
- EVOLUTION CONNECTION**

Photorespiration can decrease soybeans' photosynthetic output by about 50%. Would you expect this figure to be higher or lower in wild relatives of soybeans? Why?

10. SCIENTIFIC INQUIRY

MAKE CONNECTIONS The following diagram represents an experiment with isolated thylakoids. The thylakoids were first made acidic by soaking them in a solution at pH 4. After the thylakoid space reached pH 4, the thylakoids were transferred to a basic solution at pH 8. The thylakoids then made ATP in the dark. (See Concept 3.3 to review pH.)



Draw an enlargement of part of the thylakoid membrane in the beaker with the solution at pH 8. Draw ATP synthase. Label the areas of high H⁺ concentration and low H⁺ concentration. Show the direction protons flow through the enzyme, and show the reaction where ATP is synthesized. Would ATP end up in the thylakoid or outside of it? Explain why the thylakoids in the experiment were able to make ATP in the dark.

11. WRITE ABOUT A THEME: ENERGY AND MATTER

Life is solar powered. Almost all the producers of the biosphere depend on energy from the sun to produce the organic molecules that supply the energy and carbon skeletons needed for life. In a short essay (100–150 words), describe how the process of photosynthesis in the chloroplasts of plants transforms the energy of sunlight into the chemical energy of sugar molecules.

12. SYNTHESIZE YOUR KNOWLEDGE



The photo shows “watermelon snow” in Antarctica, caused by a species of photosynthetic green algae that thrives in subzero temperatures (*Chlamydomonas nivalis*). These algae are also found in high altitude year-round snowfields. In both locations, UV light levels tend to be high. Based on what you learned in this chapter, propose an explanation for why this photosynthetic alga appears reddish-pink.

For selected answers, see Appendix A.

MasteringBiology®

Students Go to **MasteringBiology** for assignments, the eText, and the Study Area with practice tests, animations, and activities.

Instructors Go to **MasteringBiology** for automatically graded tutorials and questions that you can assign to your students, plus Instructor Resources.

11

Cell Communication



KEY CONCEPTS

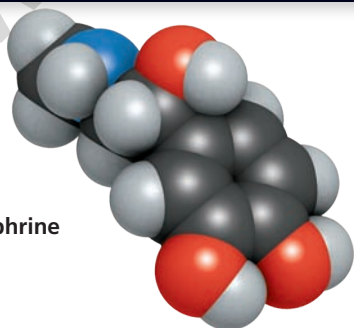
- 11.1 External signals are converted to responses within the cell
- 11.2 Reception: A signaling molecule binds to a receptor protein, causing it to change shape
- 11.3 Transduction: Cascades of molecular interactions relay signals from receptors to target molecules in the cell
- 11.4 Response: Cell signaling leads to regulation of transcription or cytoplasmic activities
- 11.5 Apoptosis integrates multiple cell-signaling pathways

▲ **Figure 11.1** How does cell signaling trigger the desperate flight of this impala?

Cellular Messaging

The impala in **Figure 11.1** flees for its life, racing to escape the predatory cheetah nipping at its heels. The impala is breathing rapidly, its heart pounding and its legs pumping furiously. These physiological functions are all part of the impala's "fight-or-flight" response, driven by hormones released from its adrenal glands at times of stress—in this case, upon sensing the cheetah. What systems of cell-to-cell communication allow the trillions of cells in the impala to "talk" to each other, coordinating their activities?

Cells can signal to each other and interpret the signals they receive from other cells and the environment. The signals may include light and touch, but are most often chemicals. The flight response shown here is triggered by a signaling molecule called epinephrine (also called adrenaline; see the model to the left). Studying cell communication, biologists have discovered ample evidence for the evolutionary relatedness of all life. The same small set of cell-signaling mechanisms shows up again and again in diverse species, in processes ranging from bacterial signaling to embryonic development to cancer. In this chapter, we focus on the main mechanisms by which cells receive, process, and respond to chemical signals sent from other cells. We will also consider *apoptosis*, a type of programmed cell death that integrates input from multiple signaling pathways.



► Epinephrine

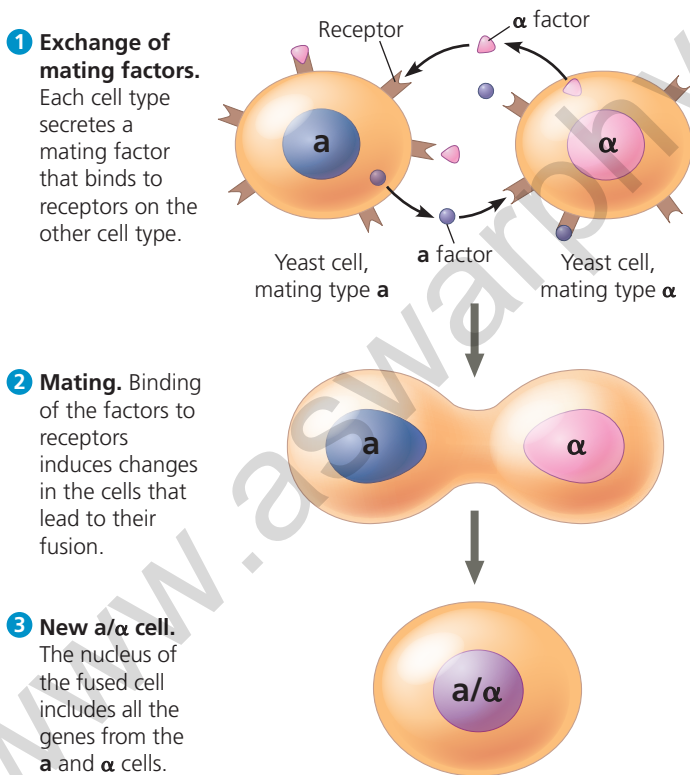
External signals are converted to responses within the cell

What does a “talking” cell say to a “listening” cell, and how does the latter cell respond to the message? Let’s approach these questions by first looking at communication among microorganisms.

Evolution of Cell Signaling

EVOLUTION One topic of cell “conversation” is sex. Cells of the yeast *Saccharomyces cerevisiae*—which are used to make bread, wine, and beer—identify their mates by chemical signaling. There are two sexes, or mating types, called **a** and **α** (Figure 11.2). Each type secretes a specific factor that binds to receptors only on the other type of cell. When exposed to each other’s mating factors, a pair of cells of opposite type change shape, grow toward each other, and fuse (mate). The new **a/α** cell contains all the genes of both original cells, a combination of genetic resources that provides advantages to the cell’s descendants, which arise by subsequent cell divisions.

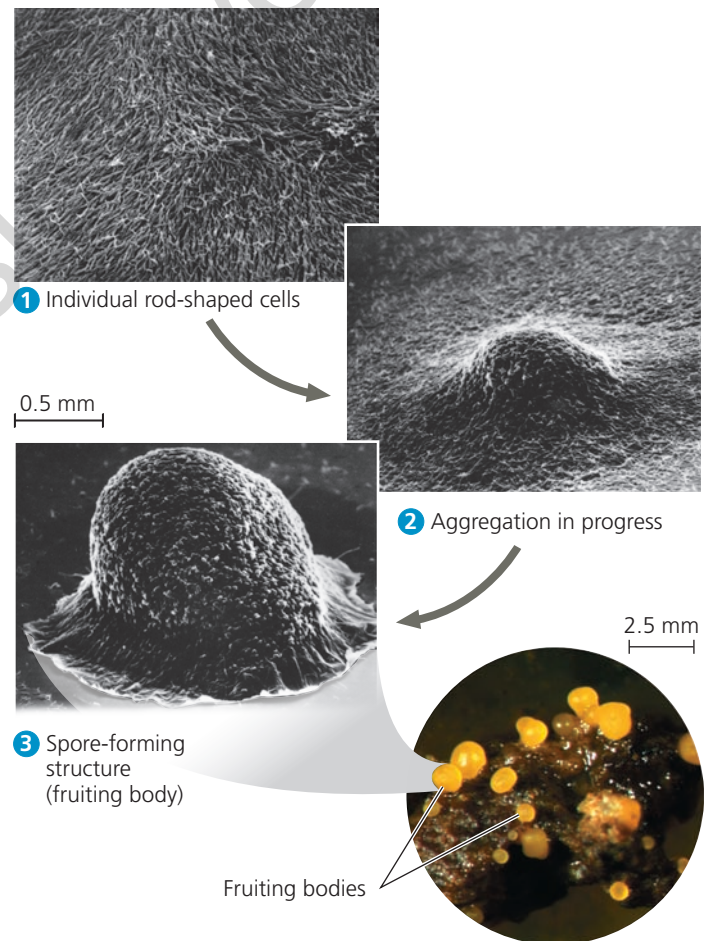
Once received by the yeast cell surface receptor, a mating signal is changed, or *transduced*, into a form that brings



▲ Figure 11.2 Communication between mating yeast cells. *Saccharomyces cerevisiae* cells use chemical signaling to identify cells of opposite mating type and initiate the mating process. The two mating types and their corresponding chemical signaling molecules, or mating factors, are called **a** and **α**.

about the cellular response of mating. This occurs in a series of steps called a *signal transduction pathway*. Many such pathways exist in both yeast and animal cells. In fact, the molecular details of signal transduction in yeasts and mammals are strikingly similar, even though their last common ancestor lived over a billion years ago. This suggests that early versions of cell-signaling mechanisms evolved well before the first multicellular creatures appeared on Earth.

Scientists think that signaling mechanisms first evolved in ancient prokaryotes and single-celled eukaryotes and then were adopted for new uses by their multicellular descendants. Cell signaling is critical in the microbial world (Figure 11.3). Bacterial cells secrete molecules that can be detected by other bacterial cells. Sensing the concentration of such signaling molecules allows bacteria to monitor the local density of cells, a phenomenon called *quorum sensing*. Quorum sensing allows bacterial populations to coordinate their behaviors in activities that require a given number



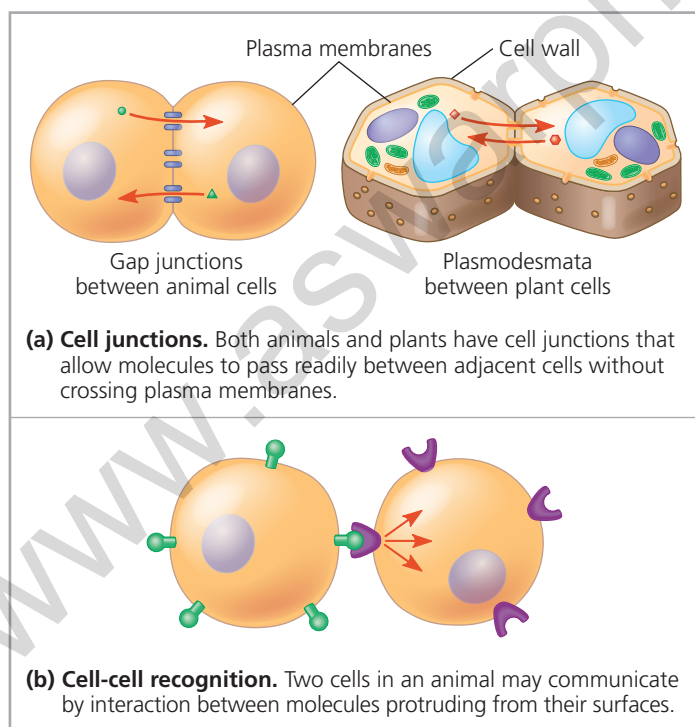
▲ Figure 11.3 Communication among bacteria. Soil-dwelling bacteria called myxobacteria (“slime bacteria”) use chemical signals to share information about nutrient availability. When food is scarce, starving cells secrete a molecule that stimulates neighboring cells to aggregate. The cells form a structure, called a fruiting body, that produces thick-walled spores capable of surviving until the environment improves. The bacteria shown here are *Myxococcus xanthus* (steps 1–3, SEMs; lower photo, LM).

of cells acting synchronously. One example is formation of a *biofilm*, an aggregation of bacterial cells adhered to a surface. The cells in the biofilm generally derive nutrition from the surface they are on. You have probably encountered biofilms many times, perhaps without realizing it. The slimy coating on a fallen log or on leaves lying on a forest path, and even the film on your teeth each morning, are examples of bacterial biofilms. (In fact, tooth-brushing disrupts biofilms that would otherwise cause cavities.) The formation of biofilms requires a sophisticated communication system, the basis of which is cell signaling.

Local and Long-Distance Signaling

Like bacteria or yeast cells, cells in a multicellular organism usually communicate via signaling molecules targeted for cells that may or may not be immediately adjacent. As we saw in Chapters 6 and 7, eukaryotic cells may communicate by direct contact, one type of local signaling (**Figure 11.4**). Both animals and plants have cell junctions that, where present, directly connect the cytoplasm of adjacent cells (**Figure 11.4a**). In these cases, signaling substances dissolved in the cytosol can pass freely between adjacent cells. Moreover, animal cells may communicate via direct contact between membrane-bound cell-surface molecules in a process called cell-cell recognition (**Figure 11.4b**). This sort of local signaling is especially important in embryonic development and the immune response.

In many other cases of local signaling, messenger molecules are secreted by the signaling cell. Some of these travel



▲ **Figure 11.4** Communication by direct contact between cells.

only short distances; such local regulators influence cells in the vicinity. One class of local regulators in animals, *growth factors*, are compounds that stimulate nearby target cells to grow and divide. Numerous cells can simultaneously receive and respond to the molecules of growth factor produced by a single cell in their vicinity. This type of local signaling in animals is called *paracrine signaling* (**Figure 11.5a**).

Another, more specialized type of local signaling called *synaptic signaling* occurs in the animal nervous system (**Figure 11.5b**). An electrical signal along a nerve cell triggers the secretion of neurotransmitter molecules. These molecules act as chemical signals, diffusing across the synapse—the narrow space between the nerve cell and its target cell—triggering a response in the target cell.

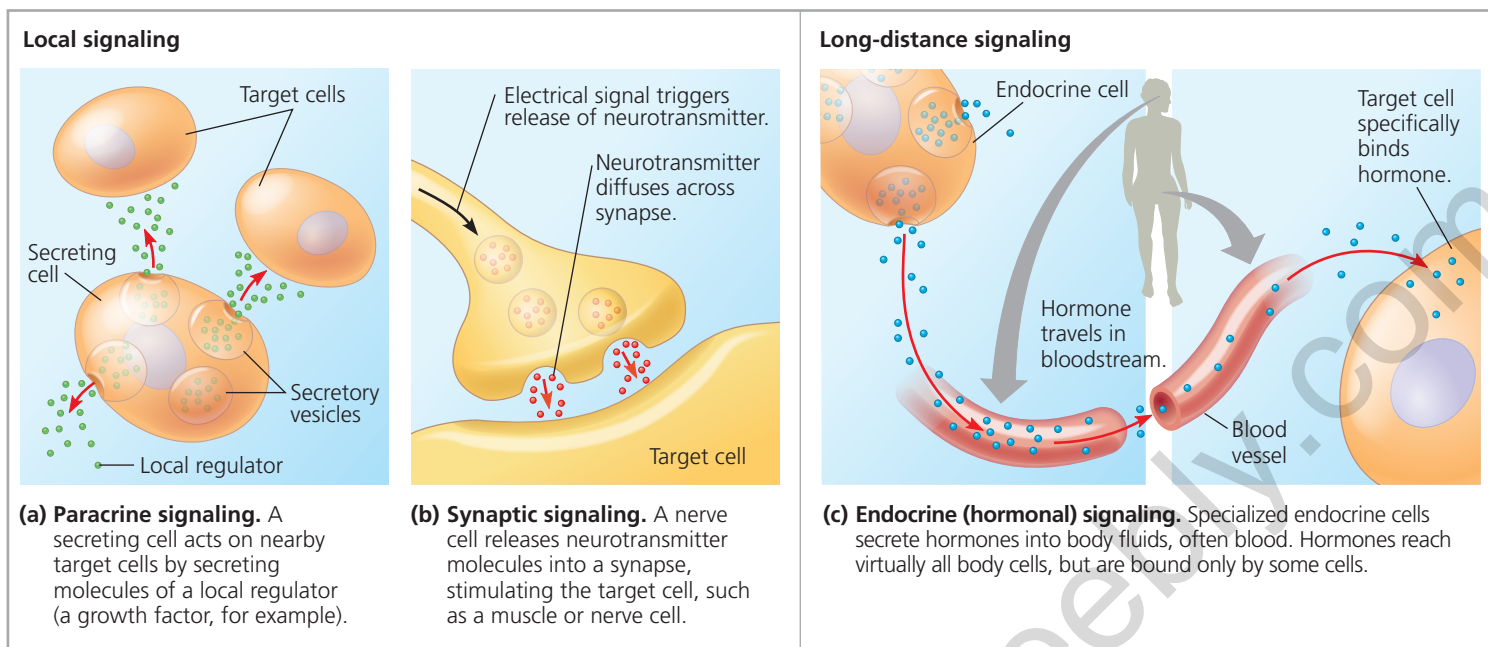
Beyond communication through plasmodesmata (plant cell junctions), local signaling in plants is not as well understood. Because of their cell walls, plants use mechanisms different from those operating locally in animals.

Both animals and plants use chemicals called **hormones** for long-distance signaling. In hormonal signaling in animals, also known as *endocrine signaling*, specialized cells release hormone molecules, which travel via the circulatory system to other parts of the body, where they reach target cells that can recognize and respond to the hormones (**Figure 11.5c**). Plant hormones (often called *plant growth regulators*) sometimes travel in vessels but more often reach their targets by moving through cells or by diffusing through the air as a gas (see Concept 39.2). Hormones vary widely in size and type, as do local regulators. For instance, the plant hormone ethylene, a gas that promotes fruit ripening and helps regulate growth, is a hydrocarbon of only six atoms (C_2H_4), small enough to pass through cell walls. In contrast, the mammalian hormone insulin, which regulates sugar levels in the blood, is a protein with thousands of atoms.

What happens when a cell encounters a secreted signaling molecule? The ability of a cell to respond is determined by whether it has a specific receptor molecule that can bind to the signaling molecule. The information conveyed by this binding, the signal, must then be changed into another form—transduced—inside the cell before the cell can respond. The remainder of the chapter discusses this process, primarily as it occurs in animal cells.

The Three Stages of Cell Signaling: A Preview

Our current understanding of how chemical messengers act via signal transduction pathways had its origins in the pioneering work of Earl W. Sutherland, whose research led to a Nobel Prize in 1971. Sutherland and his colleagues at Vanderbilt University were investigating how the animal hormone epinephrine (adrenaline) stimulates the breakdown of the storage polysaccharide glycogen within liver cells and skeletal muscle cells. Glycogen breakdown releases the sugar glucose 1-phosphate, which the cell converts



▲ **Figure 11.5** Local and long-distance cell signaling by secreted molecules in animals. In both local and long-distance signaling, only specific target cells that can recognize a given signaling molecule will respond to it.

to glucose 6-phosphate. The liver or muscle cell can then use this compound, an early intermediate in glycolysis, for energy production. Alternatively, the compound can be stripped of phosphate and released from the cell into the blood as glucose, which can fuel cells throughout the body. Thus, one effect of epinephrine is the mobilization of fuel reserves, which can be used by the animal to either defend itself (fight) or escape whatever elicited a scare (flight). (The impala in Figure 11.1 is obviously engaged in the latter.)

Sutherland's research team discovered that epinephrine stimulates glycogen breakdown by somehow activating a cytosolic enzyme, glycogen phosphorylase. However, when epinephrine was added to a test-tube mixture containing the enzyme and its substrate, glycogen, no breakdown occurred. Glycogen phosphorylase could be activated by epinephrine only when the hormone was added to *intact* cells

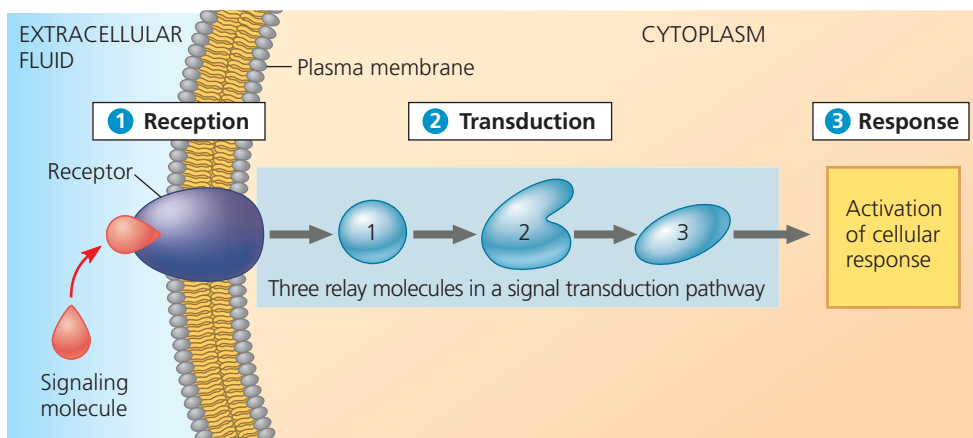
in a solution. This result told Sutherland two things. First, epinephrine does not interact directly with the enzyme responsible for glycogen breakdown; an intermediate step or series of steps must be occurring inside the cell. Second, the plasma membrane itself is necessary for transmission of the signal to take place.

Sutherland's early work suggested that the process going on at the receiving end of a cellular conversation can be dissected into three stages: reception, transduction, and response (**Figure 11.6**):

- 1 Reception.** Reception is the target cell's detection of a signaling molecule coming from outside the cell. A chemical signal is "detected" when the signaling molecule binds to a receptor protein located at the cell's surface (or inside the cell, to be discussed later).

► **Figure 11.6** Overview of cell signaling. From the perspective of the cell receiving the message, cell signaling can be divided into three stages: signal reception, signal transduction, and cellular response. When reception occurs at the plasma membrane, as shown here, the transduction stage is usually a pathway of several steps, with each specific relay molecule in the pathway bringing about a change in the next molecule. The final molecule in the pathway triggers the cell's response.

? How does the epinephrine in Sutherland's experiment fit into this diagram of cell signaling?



2 Transduction. The binding of the signaling molecule changes the receptor protein in some way, initiating the process of transduction. The transduction stage converts the signal to a form that can bring about a specific cellular response. In Sutherland's system, the binding of epinephrine to a receptor protein in a liver cell's plasma membrane leads to activation of glycogen phosphorylase. Transduction sometimes occurs in a single step but more often requires a sequence of changes in a series of different molecules—a **signal transduction pathway**. The molecules in the pathway are often called relay molecules.

3 Response. In the third stage of cell signaling, the transduced signal finally triggers a specific cellular response. The response may be almost any imaginable cellular activity—such as catalysis by an enzyme (for example, glycogen phosphorylase), rearrangement of the cytoskeleton, or activation of specific genes in the nucleus. The cell-signaling process helps ensure that crucial activities like these occur in the right cells, at the right time, and in proper coordination with the activities of other cells of the organism. We'll now explore the mechanisms of cell signaling in more detail, including a discussion of regulation and termination of the process.

CONCEPT CHECK 11.1

1. Explain how signaling is involved in ensuring that yeast cells fuse only with cells of the opposite mating type.
2. In liver cells, glycogen phosphorylase acts in which of the three stages of the signaling pathway associated with an epinephrine-initiated signal?
3. **WHAT IF?** When epinephrine is mixed with glycogen phosphorylase and glycogen in a test tube, is glucose 1-phosphate generated? Why or why not?

For suggested answers, see Appendix A.

CONCEPT 11.2

Reception: A signaling molecule binds to a receptor protein, causing it to change shape

A radio station broadcasts its signal indiscriminately, but it can be picked up only by radios tuned to the right frequency: Reception of the signal depends on the receiver. Similarly, the signals emitted by an α yeast cell are “heard” only by its prospective mates, α cells. In the case of the epinephrine circulating throughout the bloodstream of the impala in Figure 11.1, the hormone encounters many types of cells, but only certain target cells detect and react to the hormone molecule. A receptor protein on or in the target cell allows the cell to “hear” the signal and respond to it. The signaling

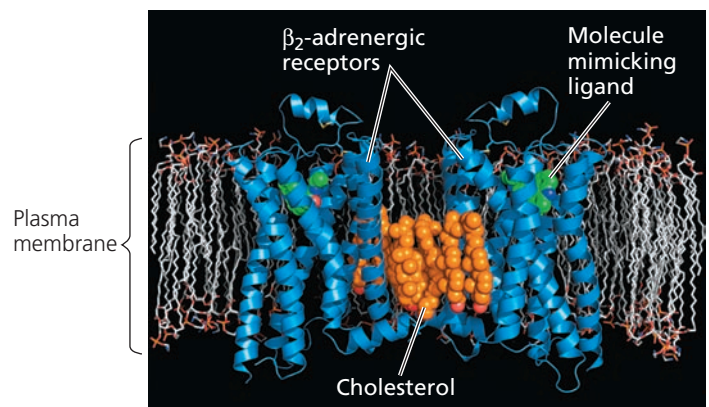
molecule is complementary in shape to a specific site on the receptor and attaches there, like a key in a lock. The signaling molecule acts as a **ligand**, the term for a molecule that specifically binds to another molecule, often a larger one. Ligand binding generally causes a receptor protein to undergo a change in shape. For many receptors, this shape change directly activates the receptor, enabling it to interact with other cellular molecules. For other kinds of receptors, the immediate effect of ligand binding is to cause the aggregation of two or more receptor molecules, which leads to further molecular events inside the cell. Most signal receptors are plasma membrane proteins, but others are located inside the cell. We discuss both of these types next.

Receptors in the Plasma Membrane

Cell-surface receptor proteins play crucial roles in the biological systems of animals. The largest family of human cell surface receptors are the nearly 1,000 G protein-coupled receptors (GPCRs); an example is shown in (Figure 11.7).

Most water-soluble signaling molecules bind to specific sites on transmembrane receptor proteins that transmit information from the extracellular environment to the inside of the cell. We can see how cell-surface transmembrane receptors work by looking at three major types: G protein-coupled receptors (GPCRs), receptor tyrosine kinases, and ion channel receptors. These receptors are discussed and illustrated in Figure 11.8; study this figure before going on.

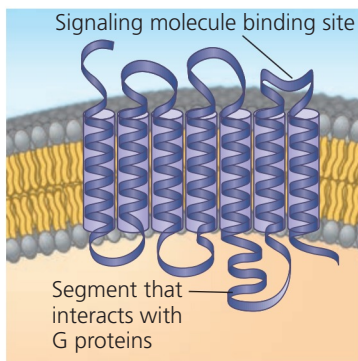
Given the many important functions of cell-surface receptors, it is not surprising that their malfunctions are associated with many human diseases, including cancer, heart disease, and asthma. To better understand and treat these conditions, a major focus of both university research teams and the pharmaceutical industry has been to analyze the structure of these receptors.



▲ Figure 11.7 The structure of a G protein-coupled receptor (GPCR). Shown here is a model of the human β_2 -adrenergic receptor in the presence of a molecule mimicking the natural ligand (green in the model) and cholesterol (orange). Two receptor molecules (blue) are shown as ribbon models in a side view within the plasma membrane.

Exploring Cell-Surface Transmembrane Receptors

G Protein-Coupled Receptors



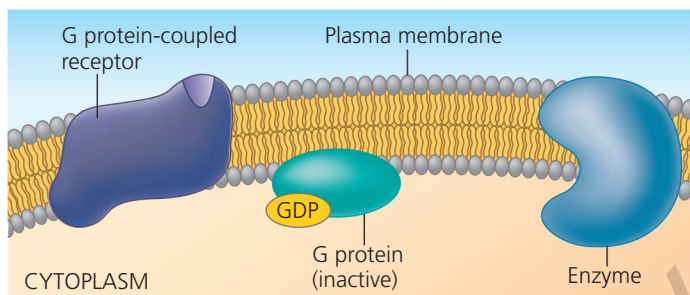
G protein-coupled receptor

A **G protein-coupled receptor** (GPCR) is a cell-surface transmembrane receptor that works with the help of a **G protein**, a protein that binds the energy-rich molecule GTP. Many different signaling molecules—including yeast mating factors, epinephrine (adrenaline) and many other hormones, as well as neurotransmitters—use GPCRs. These receptors vary in the binding sites for their signaling molecules (often referred to as their ligands) and also for different types of G proteins inside the cell. Nevertheless, GPCR proteins are all remarkably similar in structure. In fact, they make up a large family of eukaryotic receptor proteins with a secondary structure in which the single polypeptide, represented here in a ribbon model, has seven transmembrane α helices, outlined with cylinders and depicted in a row for clarity. Specific loops between the helices (here, the loops on the right) form binding

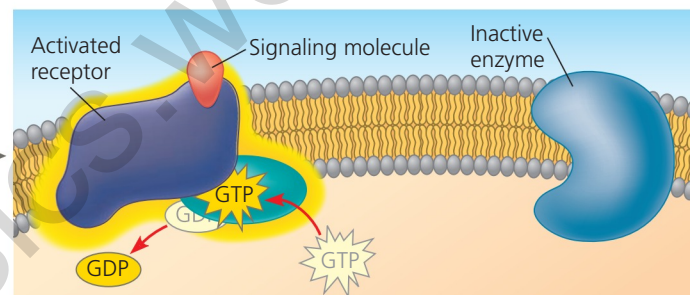
sites for signaling molecules (outside the cell) and G proteins (on the cytoplasmic side).

GPCR-based signaling systems are extremely widespread and diverse in their functions, including roles in embryonic development and sensory reception. In humans, for example, vision, smell, and taste depend on GPCRs. Similarities in structure in G proteins and GPCRs in diverse organisms suggest that G proteins and their associated receptors evolved very early among eukaryotes.

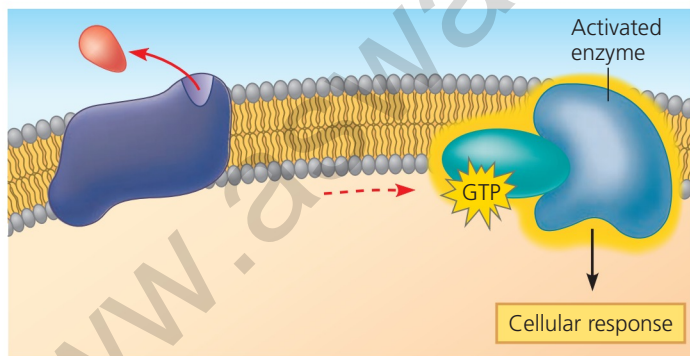
Malfunctions of the associated G proteins themselves are involved in many human diseases, including bacterial infections. The bacteria that cause cholera, pertussis (whooping cough), and botulism, among others, make their victims ill by producing toxins that interfere with G protein function. Pharmacologists now realize that up to 60% of all medicines used today exert their effects by influencing G protein pathways.



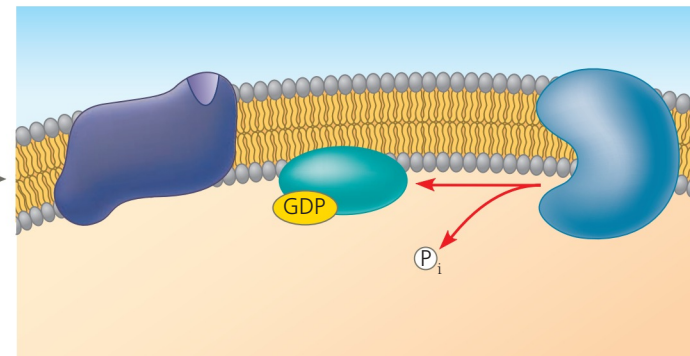
1 Loosely attached to the cytoplasmic side of the membrane, the G protein functions as a molecular switch that is either on or off, depending on which of two guanine nucleotides is attached, GDP or GTP—hence the term *G protein*. (GTP, or guanosine triphosphate, is similar to ATP.) When GDP is bound to the G protein, as shown above, the G protein is inactive. The receptor and G protein work together with another protein, usually an enzyme.



2 When the appropriate signaling molecule binds to the extracellular side of the receptor, the receptor is activated and changes shape. Its cytoplasmic side then binds an inactive G protein, causing a GTP to displace the GDP. This activates the G protein.



3 The activated G protein dissociates from the receptor, diffuses along the membrane, and then binds to an enzyme, altering the enzyme's shape and activity. Once activated, the enzyme can trigger the next step leading to a cellular response. Binding of signaling molecules is reversible: Like other ligands, they bind and dissociate many times. The ligand concentration outside the cell determines how often a ligand is bound and causes signaling.



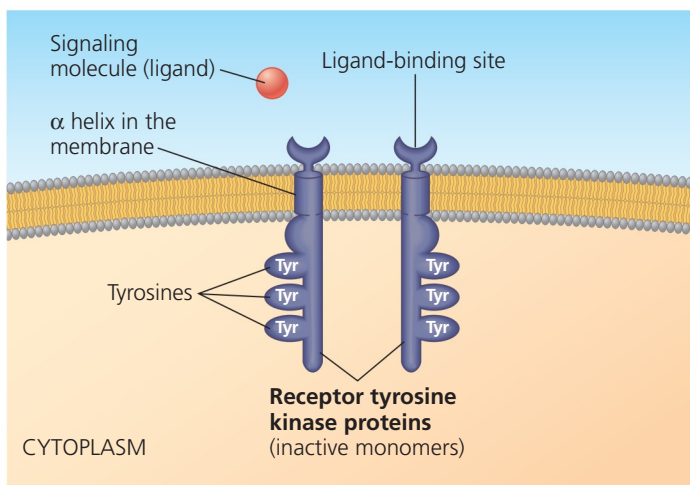
4 The changes in the enzyme and G protein are only temporary because the G protein also functions as a GTPase enzyme—in other words, it then hydrolyzes its bound GTP to GDP and P_i . Now inactive again, the G protein leaves the enzyme, which returns to its original state. The G protein is now available for reuse. The GTPase function of the G protein allows the pathway to shut down rapidly when the signaling molecule is no longer present.

Exploring Cell-Surface Transmembrane Receptors

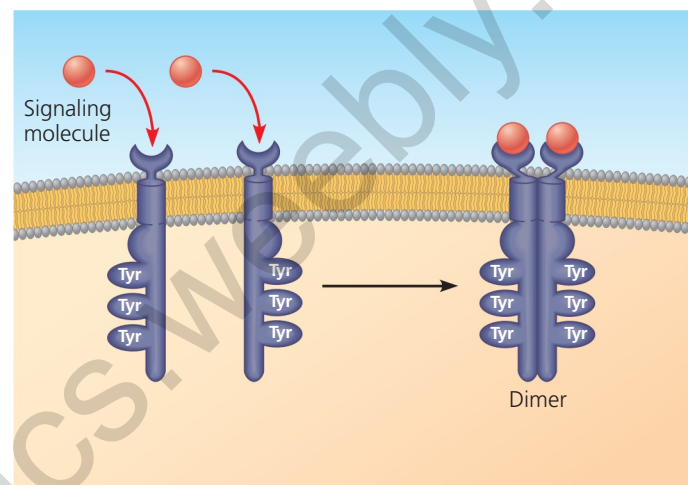
Receptor Tyrosine Kinases

Receptor tyrosine kinases (RTKs) belong to a major class of plasma membrane receptors characterized by having enzymatic activity. A kinase is any enzyme that catalyzes the transfer of phosphate groups. The part of the receptor protein extending into the cytoplasm functions more specifically as a tyrosine kinase, an enzyme that catalyzes the transfer of a phosphate group from ATP to the amino acid tyrosine on a substrate protein. Thus, RTKs are membrane receptors that attach phosphates to tyrosines.

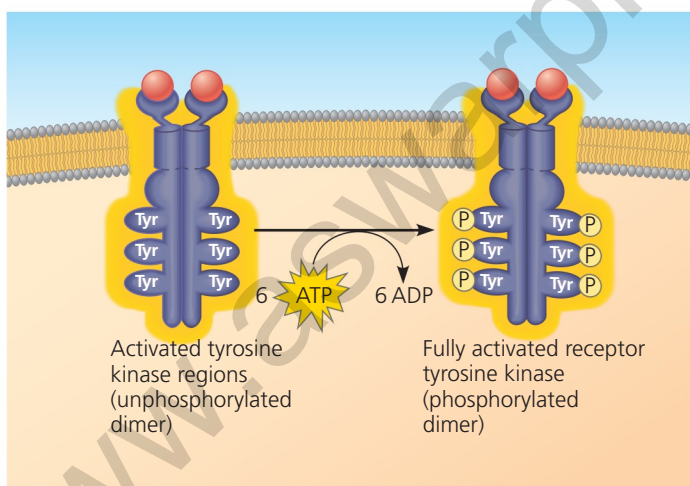
One RTK may activate ten or more different transduction pathways and cellular responses. Often, more than one signal transduction pathway can be triggered at once, helping the cell regulate and coordinate many aspects of cell growth and cell reproduction. The ability of a single ligand-binding event to trigger so many pathways is a key difference between RTKs and GPCRs, which activate a single transduction pathway. Abnormal RTKs that function even in the absence of signaling molecules are associated with many kinds of cancer.



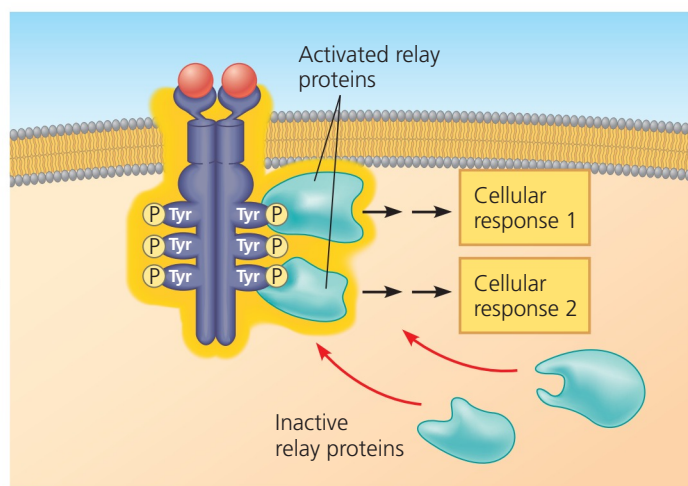
1 Many receptor tyrosine kinases have the structure depicted schematically here. Before the signaling molecule binds, the receptors exist as individual units referred to as monomers. Notice that each has an extracellular ligand-binding site, an α helix spanning the membrane, and an intracellular tail containing multiple tyrosines.



2 The binding of a signaling molecule (such as a growth factor) causes two receptor monomers to associate closely with each other, forming a complex known as a dimer in a process called dimerization. (In some cases, larger clusters form. The details of monomer association are a focus of current research.)



3 Dimerization activates the tyrosine kinase region of each monomer; each tyrosine kinase adds a phosphate from an ATP molecule to a tyrosine on the tail of the other monomer.

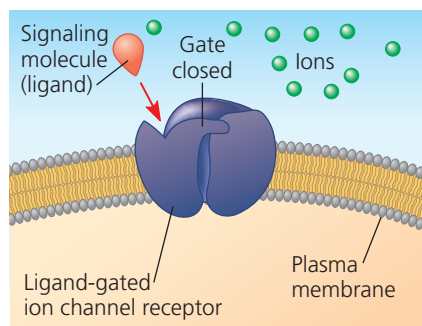


4 Now that the receptor is fully activated, it is recognized by specific relay proteins inside the cell. Each such protein binds to a specific phosphorylated tyrosine, undergoing a resulting structural change that activates the bound protein. Each activated protein triggers a transduction pathway, leading to a cellular response.

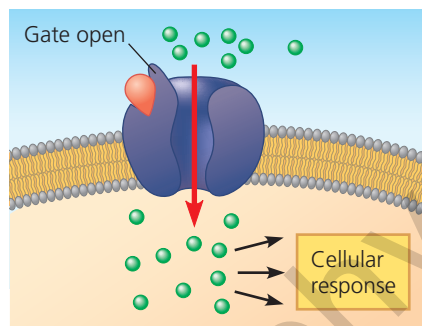
Ion Channel Receptors

A **ligand-gated ion channel** is a type of membrane receptor containing a region that can act as a “gate” when the receptor changes shape. When a signaling molecule binds as a ligand to the receptor protein, the gate opens or closes, allowing or blocking the flow of specific ions, such as Na^+ or Ca^{2+} , through a channel in the receptor. Like the other receptors we have discussed, these proteins bind the ligand at a specific site on their extracellular sides.

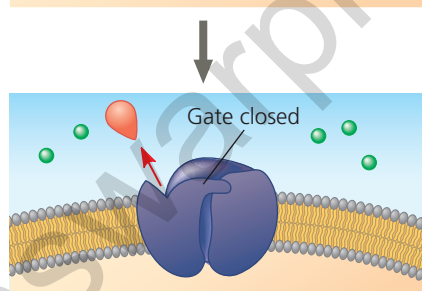
- 1 Here we show a ligand-gated ion channel receptor in which the gate remains closed until a ligand binds to the receptor.



- 2 When the ligand binds to the receptor and the gate opens, specific ions can flow through the channel and rapidly change the concentration of that particular ion inside the cell. This change may directly affect the activity of the cell in some way.



- 3 When the ligand dissociates from this receptor, the gate closes and ions no longer enter the cell.



Ligand-gated ion channels are very important in the nervous system. For example, the neurotransmitter molecules released at a synapse between two nerve cells (see Figure 11.5b) bind as ligands to ion channels on the receiving cell, causing the channels to open. Ions flow in (or, in some cases, out), triggering an electrical signal that propagates down the length of the receiving cell. Some gated ion channels are controlled by electrical signals instead of ligands; these voltage-gated ion channels are also crucial to the functioning of the nervous system, as we will discuss in Chapter 48. Some ion channels are present on membranes of organelles, such as the ER.

MAKE CONNECTIONS Is the flow of ions through a ligand-gated channel an example of active or passive transport? (Review Concepts 7.3 and 7.4.)

Although cell-surface receptors represent 30% of all human proteins, determining their structures has proved challenging: They make up only 1% of the proteins whose structures have been determined by X-ray crystallography (see Figure 5.22). For one thing, cell-surface receptors tend to be flexible and inherently unstable, thus difficult to crystallize. It took years of persistent efforts for researchers to determine the first few of these structures, such as the GPCR shown in Figure 11.7. In that case, the β -adrenergic receptor was stable enough to be crystallized while it was among membrane molecules, in the presence of its ligand.

Abnormal functioning of receptor tyrosine kinases (RTKs) is associated with many types of cancers. For example, breast cancer patients have a poor prognosis if their tumor cells harbor excessive levels of a receptor tyrosine kinase called HER2 (see Concept 12.3 and Figure 18.27). Using molecular biological techniques, researchers have developed a protein called Herceptin that binds to HER2 on cells and inhibits cell division, thus thwarting further tumor development. In some clinical studies, treatment with Herceptin improved patient survival rates by more than one-third. One goal of ongoing research into these cell-surface receptors and other cell-signaling proteins is development of additional successful treatments.

Intracellular Receptors

Intracellular receptor proteins are found in either the cytoplasm or nucleus of target cells. To reach such a receptor, a signaling molecule passes through the target cell's plasma membrane. A number of important signaling molecules can do this because they are either hydrophobic enough or small enough to cross the hydrophobic interior of the membrane. These hydrophobic chemical messengers include the steroid hormones and thyroid hormones of animals. Another chemical signaling molecule with an intracellular receptor is nitric oxide (NO), a gas; its very small molecules readily pass between the membrane phospholipids.

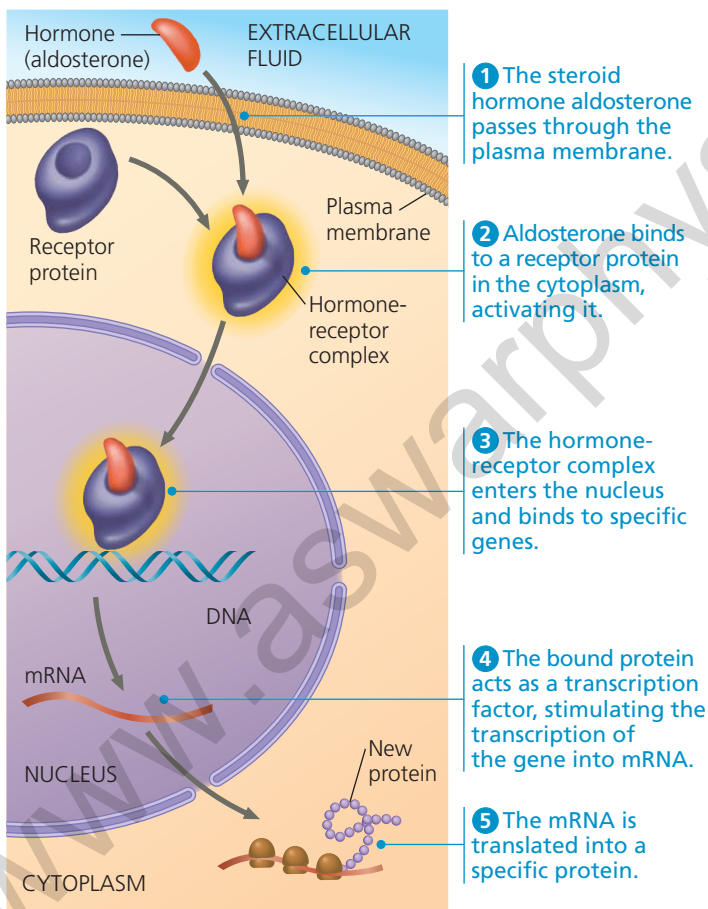
Once a hormone has entered a cell, it may bind to an intracellular receptor in the cytoplasm or the nucleus. The binding changes the receptor into a hormone-receptor complex that is able to cause a response—in many cases, the turning on or off of particular genes.

The behavior of aldosterone is a representative example of how steroid hormones work. This hormone is secreted by cells of the adrenal gland, a gland that sits above the kidney. Aldosterone then travels through the blood and enters cells all over the body. However, a response occurs only in kidney cells, which contain receptor molecules for this hormone. In these cells, the hormone binds to the receptor protein, activating it. With aldosterone attached, the active form of the receptor protein then enters the nucleus and turns on specific

genes that control water and sodium flow in kidney cells, ultimately affecting blood volume (Figure 11.9).

How does the activated hormone-receptor complex turn on genes? Recall that the genes in a cell's DNA function by being transcribed and processed into messenger RNA (mRNA), which leaves the nucleus and is translated into a specific protein by ribosomes in the cytoplasm (see Figure 5.23). Special proteins called *transcription factors* control which genes are turned on—that is, which genes are transcribed into mRNA—in a particular cell at a particular time. When the aldosterone receptor is activated, it acts as a transcription factor that turns on specific genes. (You'll learn more about transcription factors in Chapters 17 and 18.)

By acting as a transcription factor, the aldosterone receptor itself carries out the transduction part of the signaling pathway. Most other intracellular receptors function in the same way, although many of them, such as the thyroid hormone receptor, are already in the nucleus before the signaling molecule reaches them. Interestingly, many of these intracellular receptor proteins are structurally similar, suggesting an evolutionary kinship.



▲ **Figure 11.9** Steroid hormone interacting with an intracellular receptor.

? Why is a cell-surface receptor protein not required for this steroid hormone to enter the cell?

CONCEPT CHECK 11.2

1. Nerve growth factor (NGF) is a water-soluble signaling molecule. Would you expect the receptor for NGF to be intracellular or in the plasma membrane? Why?
2. **WHAT IF?** What would the effect be if a cell made defective receptor tyrosine kinase proteins that were unable to dimerize?
3. **MAKE CONNECTIONS** How is ligand binding similar to the process of allosteric regulation of enzymes? See Figure 8.20.
4. **WHAT IF?** The model shown in Figure 11.7 represents the receptor in an inactive state, not bound to a G protein. Can you suggest an approach for crystallizing the protein that would reveal the structure of the receptor while it is actively signaling?

For suggested answers, see Appendix A.

CONCEPT 11.3

Transduction: Cascades of molecular interactions relay signals from receptors to target molecules in the cell

When receptors for signaling molecules are plasma membrane proteins, like most of those we have discussed, the transduction stage of cell signaling is usually a multistep pathway involving many molecules. Steps often include activation of proteins by addition or removal of phosphate groups or release of other small molecules or ions that act as messengers. One benefit of multiple steps is the possibility of greatly amplifying a signal. If each molecule in a pathway transmits the signal to numerous molecules at the next step in the series, the result is a geometric increase in the number of activated molecules by the end of the pathway. Moreover, multistep pathways provide more opportunities for coordination and control than do simpler systems. This allows regulation of the response, as we'll discuss later in the chapter.

Signal Transduction Pathways

The binding of a specific signaling molecule to a receptor in the plasma membrane triggers the first step in the chain of molecular interactions—the signal transduction pathway—that leads to a particular response within the cell. Like falling dominoes, the signal-activated receptor activates another molecule, which activates yet another molecule, and so on, until the protein that produces the final cellular response is activated. The molecules that relay a signal from receptor to response, which we call relay molecules in this book, are often proteins. The interaction of proteins is a major theme of cell signaling. Indeed, protein interaction is a unifying theme of all cellular activities.

Keep in mind that the original signaling molecule is not physically passed along a signaling pathway; in most cases,

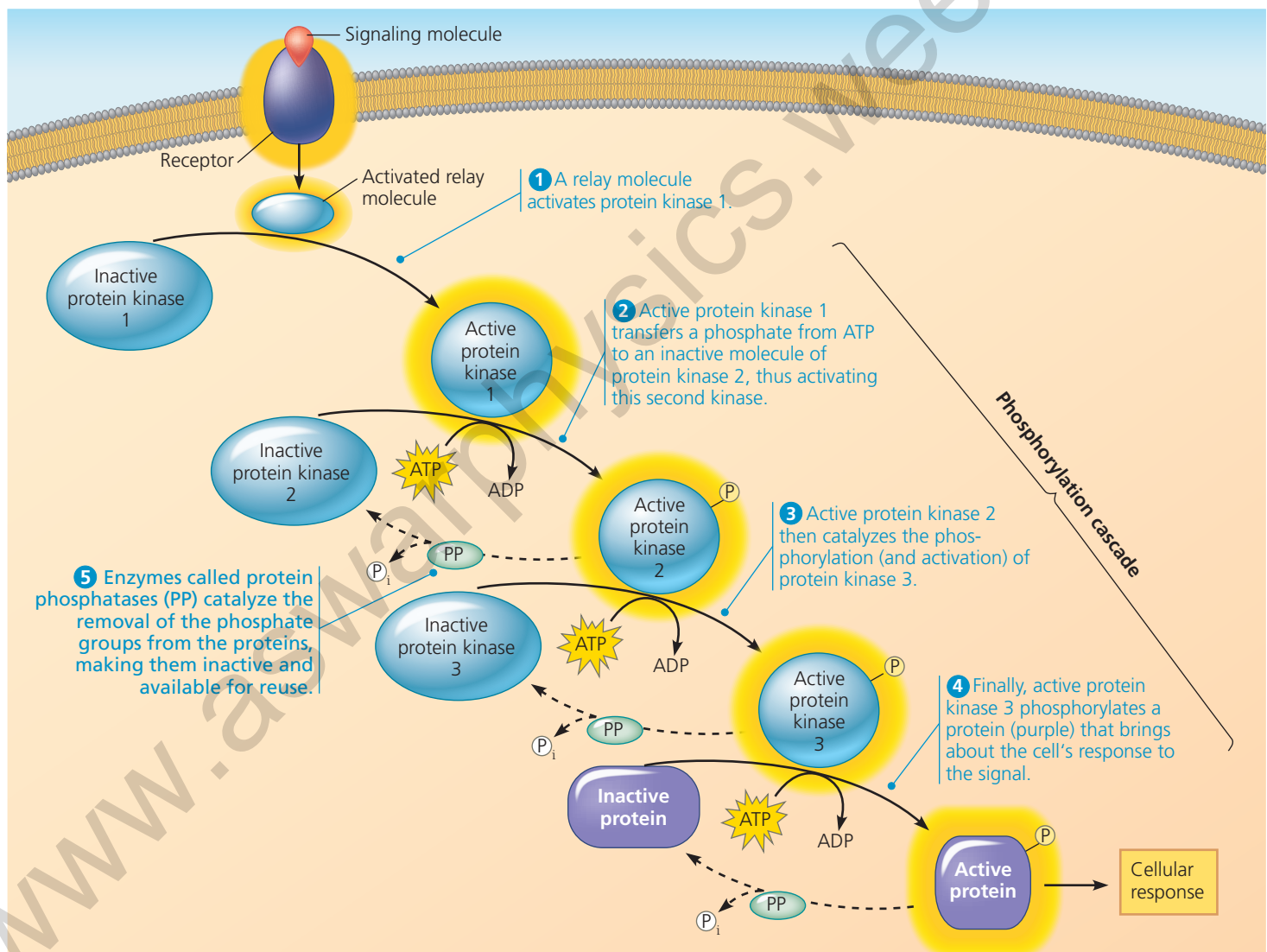
it never even enters the cell. When we say that the signal is relayed along a pathway, we mean that certain information is passed on. At each step, the signal is transduced into a different form, commonly a shape change in the next protein. Very often, the shape change is brought about by phosphorylation.

Protein Phosphorylation and Dephosphorylation

Previous chapters introduced the concept of activating a protein by adding one or more phosphate groups to it (see Figure 8.11a). In Figure 11.8, you have already seen how phosphorylation is involved in the activation of receptor tyrosine kinases. In fact, the phosphorylation and dephosphorylation of proteins is a widespread cellular mechanism

for regulating protein activity. An enzyme that transfers phosphate groups from ATP to a protein is generally known as a **protein kinase**. Recall that a receptor tyrosine kinase is a specific kind of protein kinase that phosphorylates tyrosines on the other receptor tyrosine kinase in a dimer. Most cytoplasmic protein kinases, however, act on proteins different from themselves. Another distinction is that most cytoplasmic protein kinases phosphorylate either of two other amino acids, serine or threonine, rather than tyrosine. Serine/threonine kinases are widely involved in signaling pathways in animals, plants, and fungi.

Many of the relay molecules in signal transduction pathways are protein kinases, and they often act on other protein kinases in the pathway. **Figure 11.10** depicts a hypothetical pathway containing three different protein kinases that create a **phosphorylation cascade**. The sequence of steps



▲ Figure 11.10 A phosphorylation cascade. In a phosphorylation cascade, a series of different proteins in a pathway are phosphorylated in turn, each protein adding a phosphate group to the next one in line. Here, phosphorylation activates each protein, and dephosphorylation returns it to its inactive form. The active and inactive forms of each protein are represented by different shapes to remind you that activation is usually associated with a change in molecular shape.

WHAT IF? What would happen if a mutation in protein kinase 3 made it incapable of being phosphorylated?

shown in the figure is similar to many known pathways, including those triggered in yeast by mating factors and in animal cells by many growth factors. The signal is transmitted by a cascade of protein phosphorylations, each causing a shape change because of the interaction of the newly added phosphate groups with charged or polar amino acids on the protein being phosphorylated (see Figure 5.14). The change in shape alters the function of the protein, most often activating it. In some cases, though, phosphorylation *decreases* the activity of the protein.

The importance of protein kinases can hardly be overstated. About 2% of our own genes are thought to code for protein kinases. A single cell may have hundreds of different kinds, each specific for a different substrate protein. Together, they probably regulate the activity of a large proportion of the thousands of proteins in a cell. Among these are most of the proteins that, in turn, regulate cell division. Abnormal activity of such a kinase can cause abnormal cell division and contribute to the development of cancer.

Equally important in the phosphorylation cascade are the **protein phosphatases**, enzymes that can rapidly remove phosphate groups from proteins, a process called dephosphorylation. By dephosphorylating and thus inactivating protein kinases, phosphatases provide the mechanism for turning off the signal transduction pathway when the initial signal is no longer present. Phosphatases also make the protein kinases available for reuse, enabling the cell to respond again to an extracellular signal. The phosphorylation-dephosphorylation system acts as a molecular switch in the cell, turning activities on or off, or up or down, as required. At any given moment, the activity of a protein regulated by phosphorylation depends on the balance in the cell between active kinase molecules and active phosphatase molecules.

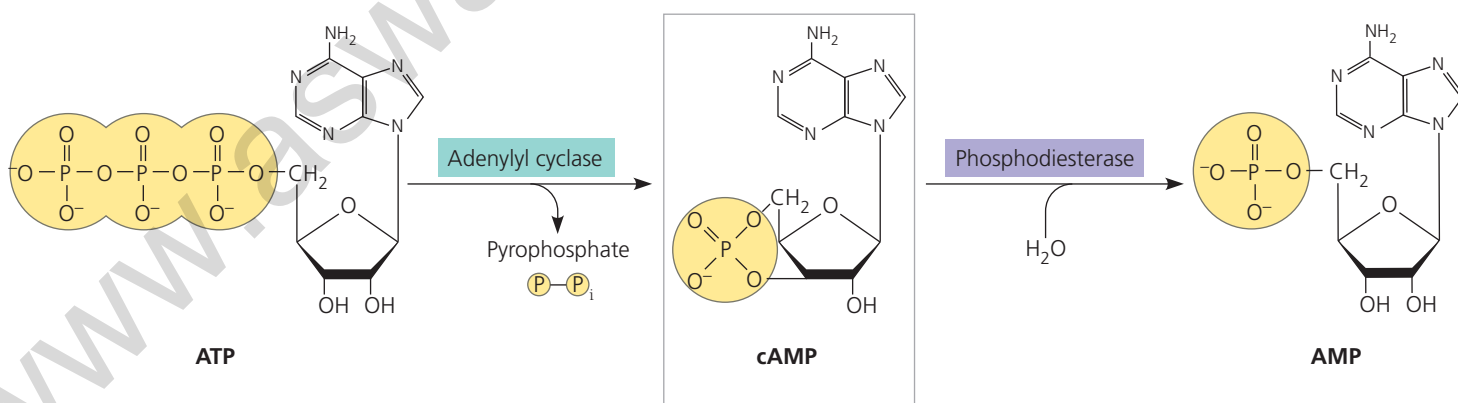
Small Molecules and Ions as Second Messengers

Not all components of signal transduction pathways are proteins. Many signaling pathways also involve small, non-protein, water-soluble molecules or ions called **second messengers**. (This term is used because the pathway's "first messenger" is considered to be the extracellular signaling molecule—the ligand—that binds to the membrane receptor.) Because second messengers are small and also water-soluble, they can readily spread throughout the cell by diffusion. For example, as we'll see shortly, a second messenger called cyclic AMP carries the signal initiated by epinephrine from the plasma membrane of a liver or muscle cell into the cell's interior, where the signal eventually brings about glycogen breakdown. Second messengers participate in pathways that are initiated by both G protein-coupled receptors and receptor tyrosine kinases. The two most widely used second messengers are cyclic AMP and calcium ions, Ca^{2+} . A large variety of relay proteins are sensitive to the cytosolic concentration of one or the other of these second messengers.

Cyclic AMP

As discussed previously, Earl Sutherland established that epinephrine somehow causes glycogen breakdown without passing through the plasma membrane. This discovery prompted him to search for a second messenger that transmits the signal from the plasma membrane to the metabolic machinery in the cytoplasm.

Sutherland found that the binding of epinephrine to the plasma membrane of a liver cell elevates the cytosolic concentration of a compound called cyclic adenosine monophosphate, abbreviated as either **cyclic AMP** or **cAMP** (Figure 11.11). An enzyme embedded in the plasma membrane, **adenylyl cyclase**, converts ATP to cAMP in response



▲ Figure 11.11 Cyclic AMP. The second messenger cyclic AMP (cAMP) is made from ATP by adenylyl cyclase, an enzyme embedded in the plasma membrane. Note that the phosphate group in cAMP is attached to both the 5' and the 3' carbons; this cyclic arrangement is the basis for the molecule's name. Cyclic AMP is inactivated by phosphodiesterase, an enzyme that converts it to AMP.

WHAT IF? What would happen if a molecule that inactivated phosphodiesterase were introduced into the cell?

to an extracellular signal—in this case, provided by epinephrine. But epinephrine doesn't stimulate adenylyl cyclase directly. When epinephrine outside the cell binds to a specific receptor protein, the protein activates adenylyl cyclase, which in turn can catalyze the synthesis of many molecules of cAMP. In this way, the normal cellular concentration of cAMP can be boosted 20-fold in a matter of seconds. The cAMP broadcasts the signal to the cytoplasm. It does not persist for long in the absence of the hormone because another enzyme, called phosphodiesterase, converts cAMP to AMP. Another surge of epinephrine is needed to boost the cytosolic concentration of cAMP again.

Subsequent research has revealed that epinephrine is only one of many hormones and other signaling molecules that trigger the formation of cAMP. It has also brought to light the other components of cAMP pathways, including G proteins, G protein-coupled receptors, and protein kinases (Figure 11.12). The immediate effect of an elevation in cAMP levels is usually the activation of a serine/threonine kinase called *protein kinase A*. The activated protein kinase A then phosphorylates various other proteins, depending on the cell type. (The complete pathway for epinephrine's stimulation of glycogen breakdown is shown later, in Figure 11.16.)

Further regulation of cell metabolism is provided by other G protein systems that *inhibit* adenylyl cyclase. In these systems, a different signaling molecule activates a

different receptor, which in turn activates an *inhibitory* G protein that blocks activation of adenylyl cyclase.

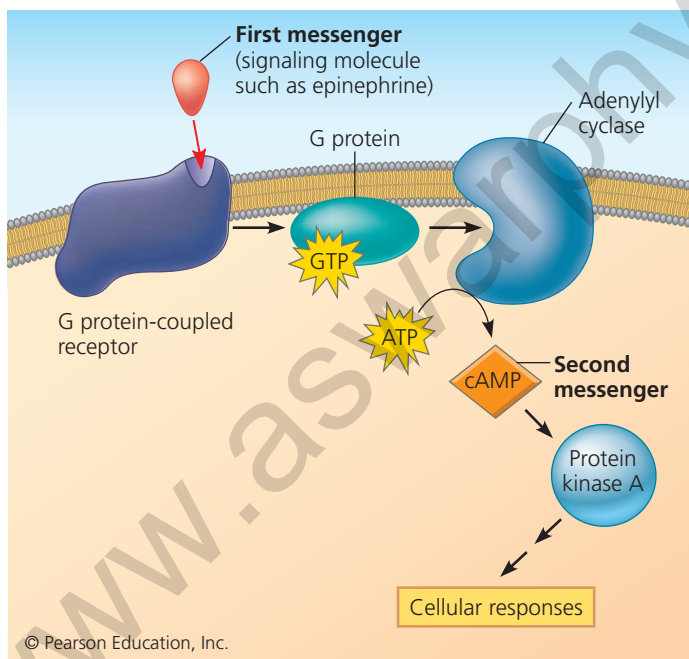
Now that we know about the role of cAMP in G protein signaling pathways, we can explain in molecular detail how certain microbes cause disease. Consider cholera, a disease that is frequently epidemic in places where the water supply is contaminated with human feces. People acquire the cholera bacterium, *Vibrio cholerae*, by drinking contaminated water. The bacteria form a biofilm on the lining of the small intestine and produce a toxin. The cholera toxin is an enzyme that chemically modifies a G protein involved in regulating salt and water secretion. Because the modified G protein is unable to hydrolyze GTP to GDP, it remains stuck in its active form, continuously stimulating adenylyl cyclase to make cAMP. The resulting high concentration of cAMP causes the intestinal cells to secrete large amounts of salts into the intestines, with water following by osmosis. An infected person quickly develops profuse diarrhea and if left untreated can soon die from the loss of water and salts.

Our understanding of signaling pathways involving cyclic AMP or related messengers has allowed us to develop treatments for certain conditions in humans. In one pathway, *cyclic GMP*, or *cGMP*, acts as a signaling molecule whose effects include relaxation of smooth muscle cells in artery walls. A compound that inhibits the hydrolysis of cGMP to GMP, thus prolonging the signal, was originally prescribed for chest pains because it increased blood flow to the heart muscle. Under the trade name Viagra, this compound is now widely used as a treatment for erectile dysfunction in human males. Because Viagra leads to dilation of blood vessels, it also allows increased blood flow to the penis, optimizing physiological conditions for penile erections.

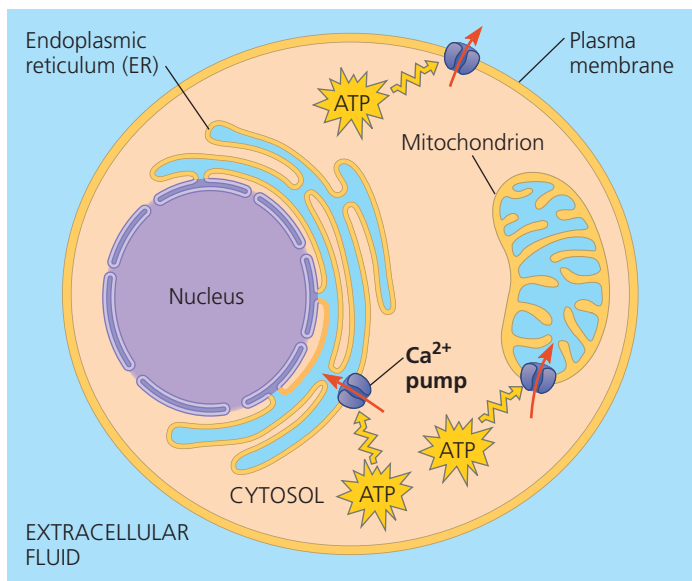
Calcium Ions and Inositol Trisphosphate (IP₃)

Many of the signaling molecules that function in animals—including neurotransmitters, growth factors, and some hormones—induce responses in their target cells via signal transduction pathways that increase the cytosolic concentration of calcium ions (Ca²⁺). Calcium is even more widely used than cAMP as a second messenger. Increasing the cytosolic concentration of Ca²⁺ causes many responses in animal cells, including muscle cell contraction, secretion of certain substances, and cell division. In plant cells, a wide range of hormonal and environmental stimuli can cause brief increases in cytosolic Ca²⁺ concentration, triggering various signaling pathways, such as the pathway for greening in response to light (see Figure 39.4). Cells use Ca²⁺ as a second messenger in pathways triggered by both G protein-coupled receptors and receptor tyrosine kinases.

Although cells always contain some Ca²⁺, this ion can function as a second messenger because its concentration in the cytosol is normally much lower than the concentration



▲ Figure 11.12 cAMP as a second messenger in a G protein signaling pathway. The first messenger activates a G protein coupled receptor, which activates a specific G protein. In turn, the G protein activates adenylyl cyclase, which catalyzes the conversion of ATP to cAMP. The cAMP then acts as a second messenger and activates another protein, usually protein kinase A, leading to cellular responses.



Key ■ High $[Ca^{2+}]$ ■ Low $[Ca^{2+}]$

▲ Figure 11.13 The maintenance of calcium ion concentrations in an animal cell. The Ca^{2+} concentration in the cytosol is usually much lower (beige) than in the extracellular fluid and ER (blue). Protein pumps in the plasma membrane and the ER membrane, driven by ATP, move Ca^{2+} from the cytosol into the extracellular fluid and into the lumen of the ER. Mitochondrial pumps, driven by chemiosmosis (see Concept 9.4), move Ca^{2+} into mitochondria when the calcium level in the cytosol rises significantly.

outside the cell (Figure 11.13). In fact, the level of Ca^{2+} in the blood and extracellular fluid of an animal is often more than 10,000 times higher than that in the cytosol. Calcium ions are actively transported out of the cell and are actively imported from the cytosol into the endoplasmic reticulum (and, under some conditions, into mitochondria and chloroplasts) by various protein pumps. As a result, the calcium concentration in the ER is usually much higher than that in the cytosol. Because the cytosolic calcium level is low, a small change in absolute numbers of ions represents a relatively large percentage change in calcium concentration.

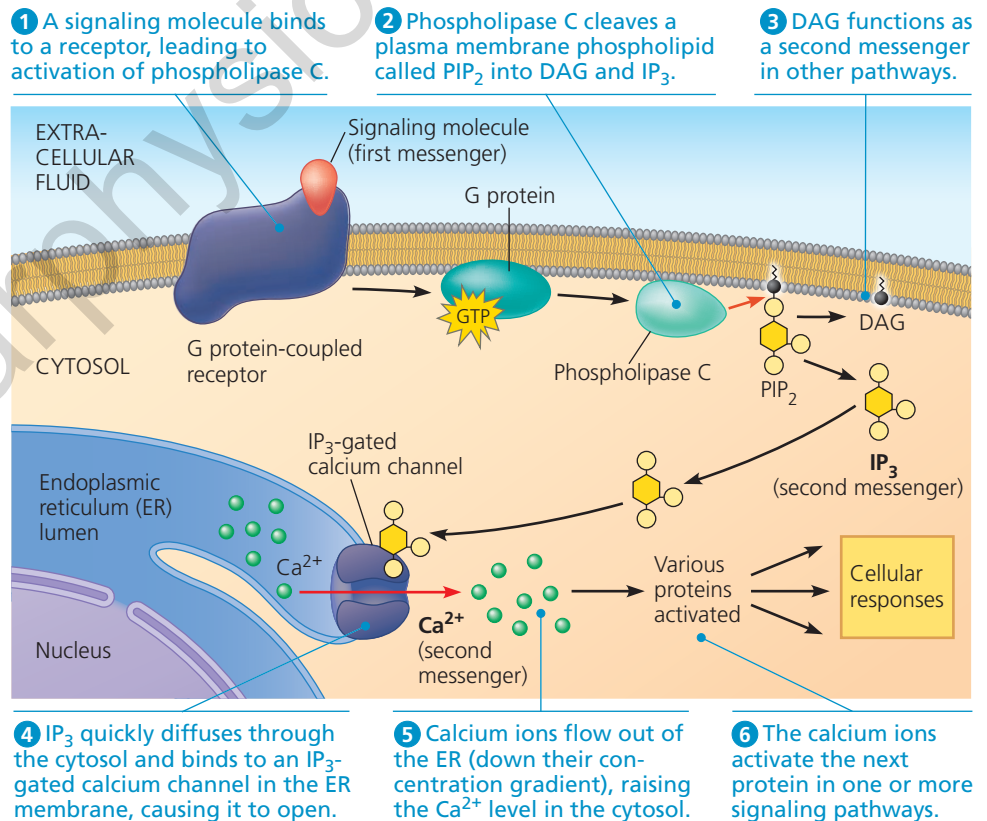
In response to a signal relayed by a signal transduction pathway, the cytosolic calcium level may rise, usually by a mechanism that releases Ca^{2+} from the cell's ER. The pathways leading to calcium release involve two other second messengers, **inositol trisphosphate (IP_3)** and **diacylglycerol (DAG)**. These two

messengers are produced by cleavage of a certain kind of phospholipid in the plasma membrane. Figure 11.14 shows the complete picture of how a signal causes IP_3 to stimulate the release of calcium from the ER. Because IP_3 acts before calcium in these pathways, calcium could be considered a "third messenger." However, scientists use the term *second messenger* for all small, nonprotein components of signal transduction pathways.

CONCEPT CHECK 11.3

1. What is a protein kinase, and what is its role in a signal transduction pathway?
2. When a signal transduction pathway involves a phosphorylation cascade, how does the cell's response get turned off?
3. What is the actual "signal" that is being transduced in any signal transduction pathway, such as those shown in Figures 11.6 and 11.10? In what way is this information being passed from the exterior to the interior of the cell?
4. **WHAT IF?** Upon activation of phospholipase C by the binding of a ligand to a receptor, what effect does the IP_3 -gated calcium channel have on Ca^{2+} concentration in the cytosol?

For suggested answers, see Appendix A.



- 1 A signaling molecule binds to a receptor, leading to activation of phospholipase C.
- 2 Phospholipase C cleaves a plasma membrane phospholipid called PIP_2 into DAG and IP_3 .
- 3 DAG functions as a second messenger in other pathways.
- 4 IP_3 quickly diffuses through the cytosol and binds to an IP_3 -gated calcium channel in the ER membrane, causing it to open.
- 5 Calcium ions flow out of the ER (down their concentration gradient), raising the Ca^{2+} level in the cytosol.
- 6 The calcium ions activate the next protein in one or more signaling pathways.

▲ Figure 11.14 Calcium and IP_3 in signaling pathways. Calcium ions (Ca^{2+}) and inositol trisphosphate (IP_3) function as second messengers in many signal transduction pathways. In this figure, the process is initiated by the binding of a signaling molecule to a G protein-coupled receptor. A receptor tyrosine kinase could also initiate this pathway by activating phospholipase C.

Response: Cell signaling leads to regulation of transcription or cytoplasmic activities

We now take a closer look at the cell's subsequent response to an extracellular signal—what some researchers call the “output response.” What is the nature of the final step in a signaling pathway?

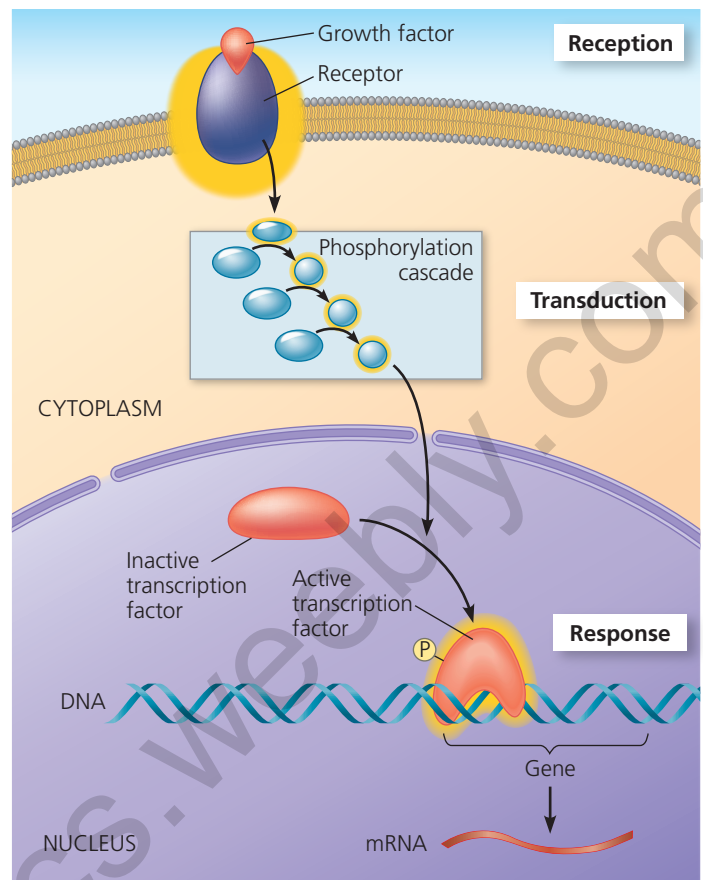
Nuclear and Cytoplasmic Responses

Ultimately, a signal transduction pathway leads to the regulation of one or more cellular activities. The response at the end of the pathway may occur in the nucleus of the cell or in the cytoplasm.

Many signaling pathways ultimately regulate protein synthesis, usually by turning specific genes on or off in the nucleus. Like an activated steroid receptor (see Figure 11.9), the final activated molecule in a signaling pathway may function as a transcription factor. **Figure 11.15** shows an example in which a signaling pathway activates a transcription factor that turns a gene on: The response to this growth factor signal is transcription, the synthesis of one or more specific mRNAs, which will be translated in the cytoplasm into specific proteins. In other cases, the transcription factor might regulate a gene by turning it off. Often a transcription factor regulates several different genes.

Sometimes a signaling pathway may regulate the *activity* of proteins rather than causing their *synthesis* by activating gene expression. This directly affects proteins that function outside the nucleus. For example, a signal may cause the opening or closing of an ion channel in the plasma membrane or a change in cell metabolism. As we have seen, the response of liver cells to the hormone epinephrine helps regulate cellular energy metabolism by affecting the activity of an enzyme. The final step in the signaling pathway that begins with epinephrine binding activates the enzyme that catalyzes the breakdown of glycogen. **Figure 11.16** shows the complete pathway leading to the release of glucose 1-phosphate molecules from glycogen. Notice that as each molecule is activated, the response is amplified, a subject we'll return to shortly.

Signal receptors, relay molecules, and second messengers participate in a variety of pathways, leading to both nuclear and cytoplasmic responses. Some of these pathways lead to cell division. The molecular messengers that initiate cell division pathways include growth factors and certain plant and animal hormones. Malfunctioning of growth factor pathways like the one in Figure 11.15 can contribute to the development of cancer, as we'll see in Chapter 18.



▲ **Figure 11.15 Nuclear responses to a signal: the activation of a specific gene by a growth factor.** This diagram is a simplified representation of a typical signaling pathway that leads to regulation of gene activity in the cell nucleus. The initial signaling molecule, a growth factor, triggers a phosphorylation cascade, as in Figure 11.10. (The ATP molecules and phosphate groups are not shown here.) Once phosphorylated, the last kinase in the sequence enters the nucleus and activates a gene-regulating protein, a transcription factor. This protein stimulates transcription of a specific gene (or genes). The resulting mRNAs then direct the synthesis of a particular protein in the cytoplasm.

Regulation of the Response

Whether the response occurs in the nucleus or in the cytoplasm, it is not simply turned “on” or “off.” Rather, the extent and specificity of the response are regulated in multiple ways. Here we'll consider four aspects of this regulation. First, as mentioned earlier, signaling pathways generally amplify the cell's response to a single signaling event. The degree of amplification depends on the function of the specific molecules in the pathway. Second, the many steps in a multistep pathway provide control points at which the cell's response can be further regulated, contributing to the specificity of the response and allowing coordination with other signaling pathways. Third, the overall efficiency of the response is enhanced by the presence of proteins known as scaffolding proteins. Finally, a crucial point in regulating the response is the termination of the signal.